

# CUSTOMER INSTALLATION INSTRUCTIONS

Reliability by Design.

IN0157 (R1) Converting Square Leg Padmount to Side Tank Mount  
Installation Instructions  
06 May 2024



## 1 Purpose

The purpose of this document is to provide guidelines for the conversion of the Sq Leg Padmount LV Frame to a Side Tank Mount LV Frame.

In addition to these instructions, installation must comply with any other relevant general or site specific: regulations, standards, and environmental and safety requirements, including safe work practices, as specified in local and/or national work instructions or codes.

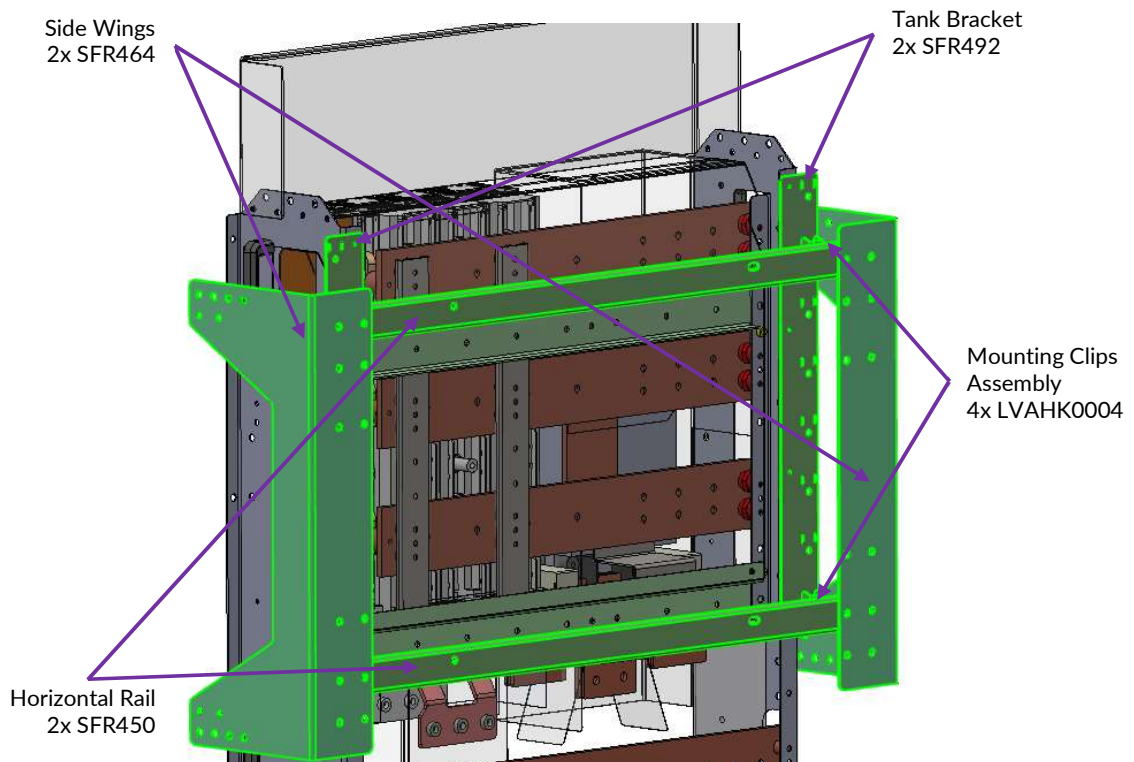
## 2 Scope

This instruction is for qualified and competent installers of the LV frame product.

## 3 Product Technical Information

Parts required to convert LV frame:

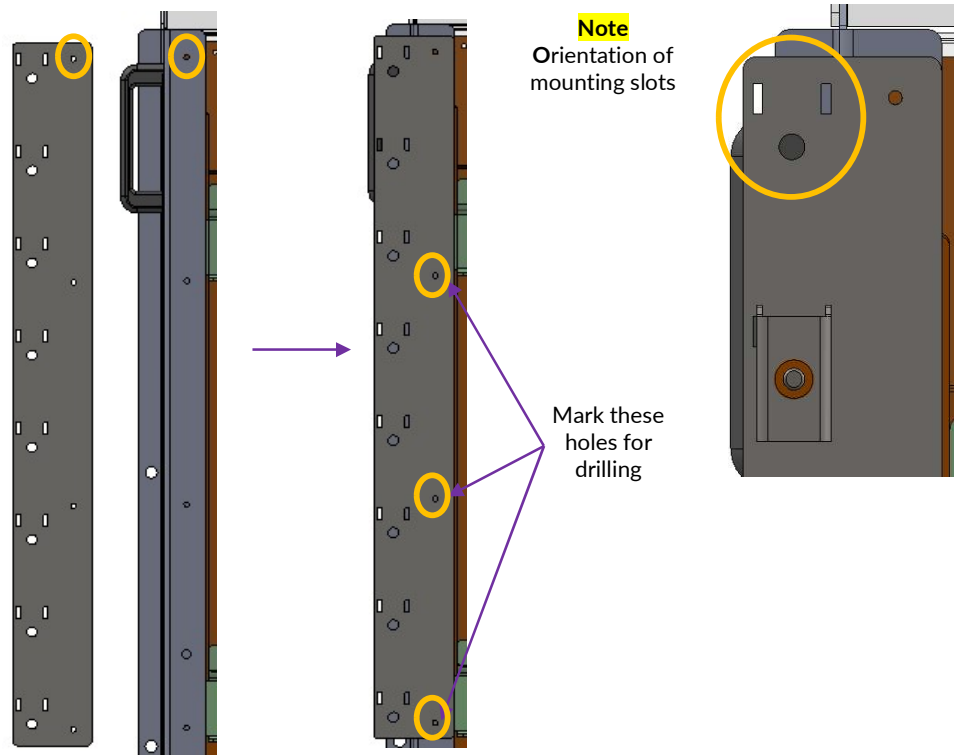
Qty	PN	Part Description
2	SFR464	Side wings
2	SFR450	Horizontal rail
2	SFR492	Tank bracket
1	LVAHK0004	Mounting clips assembly
1		Fasteners



## 4 Assembly Steps

### Leg Preparation to Tank Mount

1. Align the tank bracket (SFR492) with the back leg using the bracket's top hole

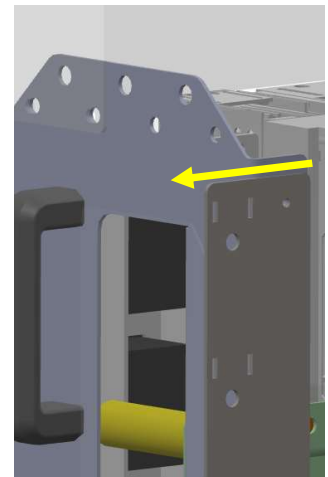


2. Mark the 3 bottom holes for drilling the leg. Remove the bracket and drill the leg using 5mm drill bit.
3. Rivet the bracket to the back of the leg using the four rivets provided.

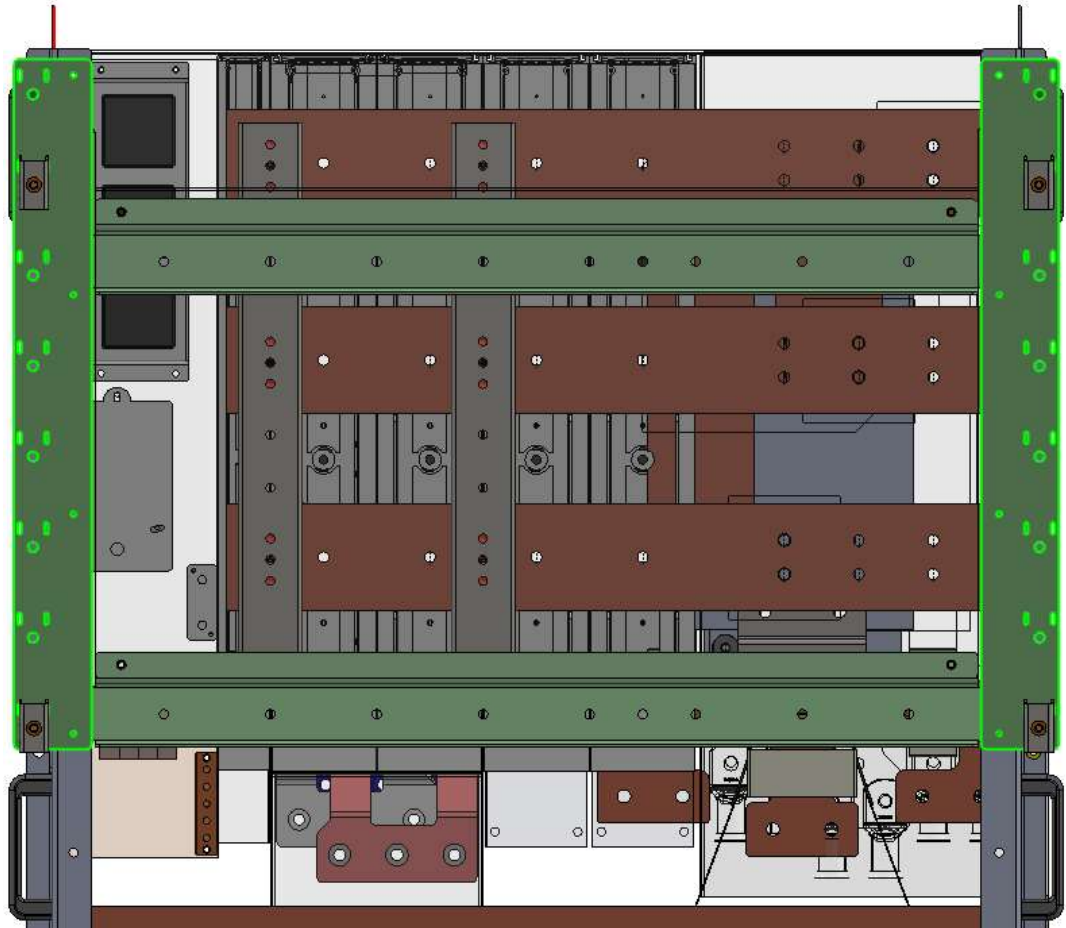
**Ensure the tank bracket is right way around before riveting.**

Note the correct orientation of the tank bracket.

Holes for mounting clips are extended towards the frame handle



Correct orientation of the fitted bracket shown below.



4. Repeat steps 1-3 on the other side of the leg

#### LV Frame Tank Mount Prep

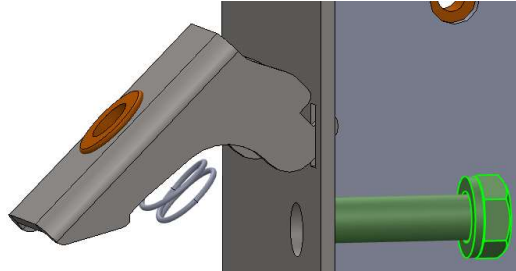
The mounting clips may be supplied at the suggested locations with the bracket. However, if clips have been supplied separately – follow the steps below.

1. Attach the four mounting clips to the tank bracket (2 on each leg).
  - a) Unscrew the bolt from the mounting clip assembly – keep the spring with the mounting clip.



- b) Attach the mounting clip with the spring onto the tank bracket on the 2 positions indicated below.

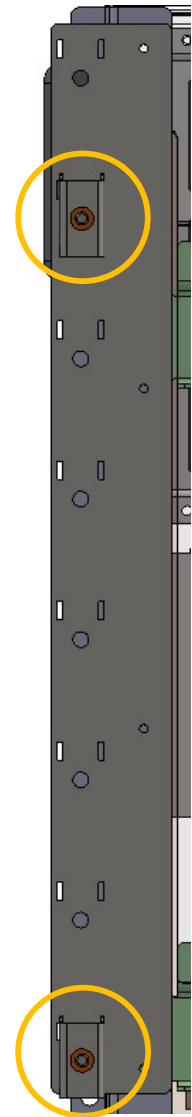
(2<sup>nd</sup> from top and bottom last hole)



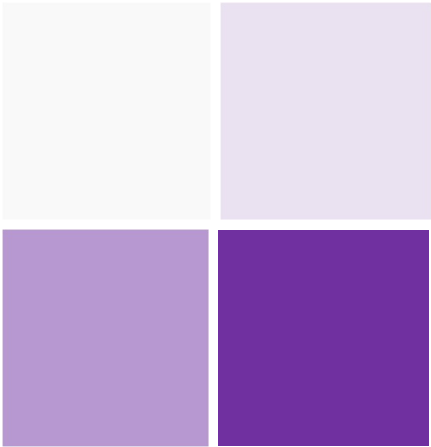
Tighten the screw until the bolt is flushed with the rivnut flange



Refer to IN0154 Customer Installation Instruction for mounting the converted Sq Leg LV Frame to the Tx.



*This document is proprietary to Hiko Power Engineering Ltd.  
We reserve the right to make changes to the product and/or its components without notice.*



0800 473 999

Christchurch Office - 85a Falsgrave St, Phillipstown

Auckland Office - Unit B5, 269A Mount Smart Rd

[www.hikopower.co.nz](http://www.hikopower.co.nz)

