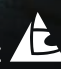


**Bowthorpe**<sup>®</sup>

**EFEN** 

 **GRIDKEY**

**NKT**

Langmatz 

**PFISTERER**

**POLARIS**

HellermannTyton

 **Lucy** Electric

 **insulect**  
VERSATILITY VIA COLLABORATION

Providing quality connection solutions alongside these leading global brands.

## Langmatz Polycarbonate Equipment Cabinets

Long lasting and fully recyclable equipment cabinets. Available in 4 sizes: 460mm, 595mm, 795mm, 1120mm

Langmatz reinforced polycarbonate equipment cabinets are made from an extremely robust, heat resistant, flame retardant, corrosion-resistant and weather resistant engineering thermoplastic: structural foamed polycarbonate. It is completely safe to handle, cut, drill and tap.

This material has excellent impact strength and is resistant to chemicals, oils and greases including cracking from solvents and aerosols.

Langmatz cabinets are also fully recyclable.

Polycarbonate is a long-lasting, weather-resistant material suitable for New Zealand outdoor applications.

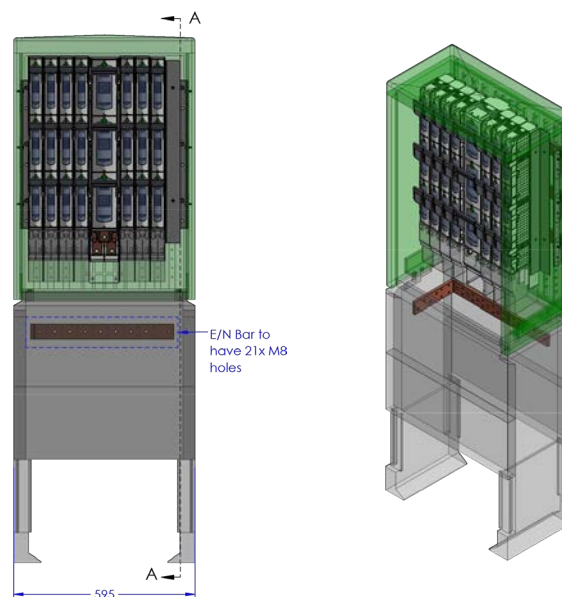
Ground planted and surface mount cabinets are available, and cabinets can be pre-fitted with busbars, mounting panels and equipment as required.

Made from fully recyclable, weather resistant, non-conductive polycarbonate - suitable for New Zealand outdoor applications. Optimum safety whether cutting, drilling or tapping.

### Product Benefits

- Door with hinges, pivoting lever closure, prepared for the installation of a profile half cylinder or a cruciform lock
- Also with partition (double bore lock system)
- Cabinet texturing to prevent posters being affixed to it
- Locking edge for increased access protection for manholes
- Prepared for additional ventilation elements
- Painted in NZ to suit network requirements

### Product Details



Hiko Code	Max number of ways (vertical disconnects)		Width (mm)	Height above base (mm)	Depth (front to back) (mm)
	DIN2/3	DIN00			
LA460CAB	3	7	460	870	330
LA595CAB	5	10	595		
LA795CAB	7	14	795		
LA1120CAB	10	20	1120		

## Aegis<sup>EcoTec</sup> non-SF6 Ring Main Unit

A breath of fresh air for electrical distribution.

Our new Aegis<sup>EcoTec</sup> RMU from Lucy Electric offers the same outstanding performance and applications as our existing Aegis range of MV RMUs but with greatly improved environmental credentials. The Aegis<sup>EcoTec</sup> uses synthetic air as the insulating medium, which means a global warming potential (GWP) of zero.

The Aegis<sup>EcoTec</sup> RMU is designed to be smaller and more efficient, while maintaining compatibility with standard installation requirements. As a result, the EcoTec RMU provides the same set of solutions for substations as conventional equivalents, but in a more compact and optimised package.

Across the Aegis<sup>EcoTec</sup> range, operator safety is paramount with integral interlocking at the forefront of its innovative mechanism design. With a clear, unambiguous mimic and 100% padlockable human-machine interface (HMI), this solution is straightforward and secure.

To ensure the high industrial and operational reliability NZ's networks need, Aegis<sup>EcoTec</sup> 12kV RMUs use the same core mechanism design as the hugely successful Aegis RMU range which is installed worldwide.

Hit your sustainability goals with a global warming potential of zero. Aegis<sup>EcoTec</sup> also has interlocking mechanism design for excellent operator safety.



Aegis<sup>EcoTec</sup> non-SF6 RMU available in New Zealand.

Contact Hiko Power on **0800 473 999**

### Product Features

- -25°C to + 55°C environmental operating range
- Maximum altitude for operation without derating: 1000m (above sea level)
- Insulation medium: Non-SF6 Gas and SF6 Gas
- Rated pressure at +20°C: 0.03 MPa
- Interruption medium: vacuum and fuse

Hiko is proud to be certified to the following ISO standards:



Environment  
ISO 14001



Health & Safety  
ISO 45001



Quality  
ISO 9001



ISO 9001  
ISO 14001  
ISO 45001



## Hiko Universal Tank Mount Frame

Our Universal design simplifies connection. Designed to be installed safely in less than 30 minutes.

Hiko's low voltage Universal Tank Mount frame fits typical transformers including 100 to 750 kVA Etel Minipad, 200 to 500 kVA Hitachi / ABB Mini as well as the 300 and 500 kVA Tyree cubicle transformers.

Key to installing the frame and its universal fit is the two-rail system devised by the Hiko design team. These stainless steel rails are simply bolted to the mounting bosses on the transformer and the universal frame is then lifted onto the

rails where the open clamps on the frame make positioning easy. The frame is then secured in place with a long nut driver tightening the spring-loaded clamp bolts.

Customisable to each network's requirements!

Frame fits typical transformers, can be installed in under 30 minutes and can be customised to each networks requirements.

### Bushing Cover

Operator safety

### Mounting Clips

Safe and easy lifting on to horizontal tank rail

### Stainless Steel Construction

Precision-built and durable for long asset lifespan

### Adjustable Feet

Adjustable and removable feet increase cable access

### Service Panel

Configured to each network's requirements and includes streetlight supply



### QR Code Access

Easy onsite access to instructions and animation

### Lifting Handles

For ease of installation

### Horizontal Tank Rail

Convenient frame attachment method

### Heatshrink on Busbars

For safety and identification

### Side Mount Earth Bar

Earth connections allow for easy access to neutral bar

To learn more about what makes the Hiko universal tank mount frame a leader in design customized for each Transformer's use call us on 0800 473 999 to arrange a demonstration.

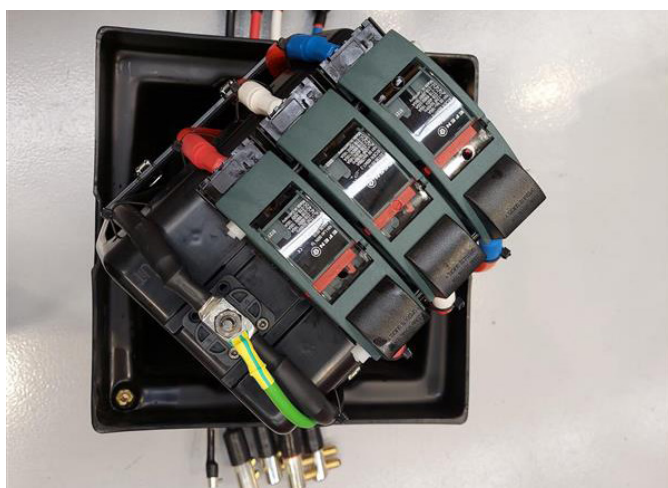
## Hiko U-Pillar Underground Service Connection Box

Branching, looping and conduit U-PILLAR versions now available. The Hiko U-Pillar is a new concept in service connections for branching and looping networks. Building on Hiko's expertise in underground switchgear, the U-Pillar delivers a simple, robust, secure, cost effective and fully underground solution for 63 A / 100 A service fuses and 160 A DIN standard disconnects.

### Product Features

- Current rating from 63A to 160A
- Single or four core connections for branching network
- From 1 to 6-way service connection
- Single core connection for looping network
- U-Pillar is an Arc Initiation Protected Zone
- IP: IP4x / Flammability: UL94
- Service connection: single phase or three phase
- Looping maximum current rating: 230A
- Dimension: 375 x 375
- Lid load: class B and D
- Designed to have an air chamber (water bell principle) for switch gear to guard against underground water level
- Unique design provides a "pull up" feature to allow inspection, maintenance and later connection above ground level
- Conduit U-Pillar also provides 1-to-3-way internal connection solution for drive way and footpath
- Service cable can be changed to any three directions of U-Pillar

Reduce the need for on-street assets, ensuring public and operator safety.



## NKT Medium Voltage Terminations

For zero-maintenance connections, whatever the situation is!

Whether you're connecting medium voltage cable terminations to air-insulated switchgear, transformers, overhead lines or busbars, it's vital to use the right type of MV cable termination. At Hiko, we supply all NKT terminations. So, no matter what cable you're working with, and what you're connecting it to, you can be sure that we've got a reliable termination that will fit the bill.

Outdoor terminations must be able to withstand everything that the weather can throw at them - heat, cold and rain. Factors including voltage, altitude, pollution, and insulation materials all affect creepage and clearance distances, while

tin-plated cable lugs prevent chemically induced corrosion. Remember while indoor terminations can be installed in any position, outdoor terminations should be no more than 90 degrees from the vertical in order to prevent rainwater from accumulating.

This environmentally friendly design is easy to install with more reliable terminations.

### Product Benefits

- Quick and easy to install meaning power is back on faster
- Single-piece design with capacitive stress control making a more reliable termination
- Larger sheds to allow for creepage in outdoor terminations avoiding failures due to tracking
- Mechanical or compression cable lugs are user friendly for jointers
- NKTs environmentally friendly design approach considers the life cycle of the product



Outer Cone Connectors



Inner Cone Connectors



Terminations



## Cross Bonding Link Boxes

Minimise sheath currents and provide sheath voltage protection.

Link Boxes ensure a weatherproof environment for connecting links, whether for earthing or cross-bonding high voltage cables. Insulect's range of link box designs, available through Hiko, use various earthing practices to minimise sheath currents and provide sheath voltage protection. For example, direct earthing or SVL earthing through sheath voltage limiter surge arrester; cross bonding with insulation withstand between phases; cable sheath protection using metal oxide sheath voltage surge limiters.



### Link Box Ultra

**ULTRA is our original Link Box design, built for demanding conditions and highest performance.**

- Material 316 Stainless Steel
- Short Circuit 63 kA/1s
- Enclosure rating IP68
- Internal power arc 40 kA/0.12s
- Pressure test meter 10M

Insulect link box designs use various earthing practices to minimise sheath currents and provide sheath voltage protection.

### Link Box Lite

**The LITE is designed for less arduous applications and where ease of handling and install is important.**

- Material 304 Stainless Steel
- Short Circuit 40 kA/1s
- Enclosure rating IP68
- Internal power arc 20 kA/0.12s
- Pressure test meter 2M

Hiko is proud to be certified to the following ISO standards:



Environment  
ISO 14001



Health &  
Safety  
ISO 45001



Quality  
ISO 9001



ISO 9001  
ISO 14001  
ISO 45001

## Pfisterer SICON Connectors

The right connection for all conductors. One SICON replaces 98 compression joints.

SICON bolted connectors are based on Pfisterer's extensive expertise in contact technology. Innovations, like the shear-off bolts with infinite adjustment, combine technical and practical advantages for maximum contact quality.

In contrast to compression technology, the range of SICON connectors is significantly smaller. The application range includes Split Connectors, Branch Connectors and Cable Lugs. Instead of needing one sleeve for every conductor, SICON have eight standard variants, meaning that engineers and jointers are equipped for every eventuality on the

construction site. SICON connectors are fitted using a standard ratchet with a hexagonal bit so there is no need to pack your pressing tools.

Bolted connectors are safe, cost-efficient, and provide easy installation. No wonder their popularity keeps on growing among electrical engineers.

**Covering Caps**  
No sharp edges

**Stepless Shear-Off Bolt**  
No predetermined shear-off points

**Centering Rings**  
One-click fast installation

**Short Connector Length**  
Fits into shorter joints

**Oil Stop**  
Accommodates transition applications

**Friction Disc**  
Higher contact force

**Transverse Grooves**  
Ensures low contact resistance

**Universal Application**

Copper

Aluminium

Also available as lugs, Branch Connectors and Split Connectors.



## HellermannTyton Cable Management Solutions

Improve safety and lifespan of solar panels. Keep cables off panels with purpose-built fittings.

The world wants solar energy, and Hiko with HellermannTyton is active in keeping the industry moving forward with purpose-build cable management solutions that keep cables off of solar panels. Remember, even the best parts can fail if used incorrectly. The cost of a failed inspection including rework can erase any anticipated cost savings which is why Hiko and HellermannTyton can help you identify the right cable management solutions for your renewables project.

Nature can be brutal on any material. The solution isn't more clamps or cable ties. HellermannTyton solutions start with UV stabilized resins, and up the ante with impact-modified and heat-stabilized materials, PA12, POMUV and PVDF. HellermannTyton products are designed to address the unique demands of single-axis trackers and ground mount systems. In part, this means engineering that takes into consideration both temperature cycling and daily movement. It can also involve designing solutions tailor-made to specific modules.

### Product Benefits

- Bespoke product designed to suit Nextracker and Array Technology Systems
- Material made from polyamide 6.6, high impact modified, heat and UV-stabilised (PA66HIRHSUV), Stainless Steel (SS304)
- Multiple routing, lockable, releasable, stackable, vibration absorbing
- Depending on the variant, the CMRC can be screwed on with an M6/M8/M10 screw or attached to an M8 threaded bolt
- Fast and easy fixing in line on torque tube
- Engineered for tough solar conditions
- Mitigates electrical incidents on the array
- Softer and less likely to slice through a cable jacket



UV resistant cable management products can make cables 'invisible', reduce risk of fire or injury and save space.



## Polaris PSMTL Transformer Connectors

Bolted connectors for ground and pole mounted transformers. High-strength 6061-T6 aluminium alloy provides premium electrical performance.

Hiko's range of PSMTL transformer connectors are application engineered by Polaris for the New Zealand market to provide a secure, reliable and cost effective means of connection for pole-mounted and small ground-mounted transformers. Connection is either by slip-fit and set screw onto the transformer bushing stud or bolted directly to the bushing palm. No cable lugs are required, reducing tooling and installation costs and electrical losses.

Polaris PSMTL transformer connectors are specifically designed for New Zealand's electricity infrastructure. They offer a secure, reliable, and economical solution for connecting pole-mounted and small ground-mounted transformers.

### Product Features

- Manufactured from high strength 6061-T6 aluminium alloy to provide premium electrical and mechanical performance
- Dual rated for copper or aluminium conductors
- Meets or exceeds ANSI C119.4 Class A specifications
- Range taking design reduces inventory
- Rated for 600 Volts



# Power Engineering Solutions

for electricity and distribution.



## EFEN LV Horizontal Fuse-Switch Disconnects

The best of both worlds with EFEN SILAS and IN Series.

Horizontal fuse switch disconnects provide an alternative mounting and connection method to vertical disconnects, for example for single circuit supplies and for the safe and cost effective upgrade or replacement of earlier generations of fuse switches.

Both the SILAS and IN series use the widely available and economic DIN blade fuse cartridges and offer an excellent level of operator safety thanks to their AC22B switching capacity. Both may be used in AC or DC applications, as specified by their ratings.

The SILAS range is designed for independent mounting for single switch protection applications by virtue of its terminal covers. These features are ideally suited to solar applications or wherever battery protection is required in an internal installation.

SILAS is also suitable for multiple feeder mounting on busbars with ratings from 160 A to 630 A. The EFEN IN series of switches is available from 160 to 1,600 A and is a more compact design. Cable covers are supplied: these can be removed for use in applications where a protective enclosure is used. Its compact size makes the IN ideal for network pillar applications. Sizes 00, 1, 2 and 3 of the IN series and sizes 1, 2 and 3 of the SILAS series have the added advantage of phase protection barriers moulded into the base.



The EFEN SILAS range has been used successfully in New Zealand for 30+ years. Horizontal fuse switches provide an alternate mounting and connection method with excellent operator safety.

Hiko is proud to be certified to the following ISO standards:

Environment ISO 14001	Health & Safety ISO 45001	Quality ISO 9001	ISO 9001 ISO 14001 ISO 45001



## BOWTHORPE HD Series Line Taps

The Original NZ Line Tap. Since 1952. Genuine BOWTHORPE HD Series Line Taps are marked with the name "BOWTHORPE".

The BOWTHORPE HD Series Line Taps have earned an enviable record for robustness and reliability in New Zealand and overseas since 1952.

They have a long-term trouble-free record in a wide variety of operating conditions providing a lasting and inexpensive solution. They can be quickly and easily installed (and removed) without the need for special tools.

BOWTHORPE HD Line Taps have been type tested for 1,000 hours of heat-cycling, to the latest version of BS 3288.1.



100% owned by Hiko Power Engineering, Bowthorpe Series Line Taps are robust and reliable with a long-term, trouble-free record.

### Technical Data

Type	Product Code	Pack Quantity	Application Range						Recommended	
			Cross section (mm <sup>2</sup> )		Diameter (mm)		Strands/diameter, (mm)		Torque setting (Nm)	
			Min	Max	Min	Max	Min	Max	Min	Max
HD9	BL500	500	4	7	2.7	4.0	7 / 0.91	7 / 1.12	5	10
HD10	BL510	200	10	16	3.8	5.8	7 / 1.32	7 / 1.75	10	15
HD12	BL520	150	16	25	4.3	6.6	7 / 1.63	7 / 2.14	15	20
HD12A	BL530	100	16	35	5.3	8.1	7 / 1.70	19 / 1.63	20	25
HD13	BL540	50	25	50	6.6	10.1	7 / 2.11	19 / 1.83	40	45
HD14	BL550	50	35	70	7.3	11.1	19 / 1.53	19 / 2.14	50	55
HD15	BL565	25	50	95	8.8	13.4	19 / 1.75	37 / 1.83	105	110
HD18	BL575	25	70	120	10.5	16.1	19 / 2.11	37 / 2.11	105	110

0800 473 999

sales@hikopower.co.nz

www.hikopower.co.nz