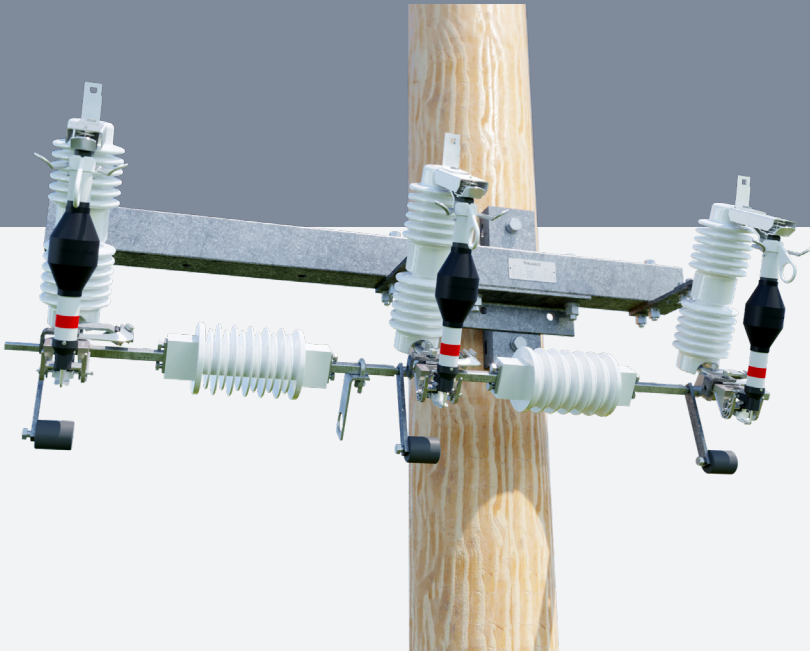




Electronic Sectionalizer

Sectolink
12kV, 24kV, 36kV



Electronic Sectionalizers have been developed for usage on overhead distribution lines to eliminate transient faults. They are typically used in conjunction with a recloser and replace the traditional dropout fuse protection.



12, 24, 36kV voltage rating

Available in two sizes of 12/24kV and 36kV with pickup current ratings from 8A up to 400A.



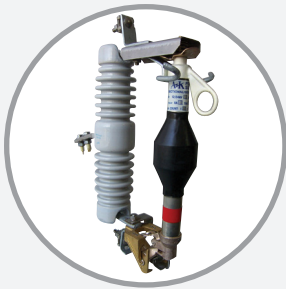
Simple customisation

The sectionalizer performance settings can be manually adjusted with ease.



Various mounting options

Single, double or three pole ganged mounts available with hotstick operation.



One EDO size fits all

Fits standard single venting 150kV BIL and 170kV BIL EDO mounts.

Features

LOW OR HIGH CURRENT

The sectionalizer suits installation in low and high current applications such as SWER lines or rural locations.

RECLAIM TIME

With fully customized reclaim time, the sectionalizer can be programmed at time of manufacture to suit any network and recloser protection requirements

GANGED OPERATION

Our custom design two and three phase mounts include a fully ganged operation ensuring sectionalizer dropout of all 3 phases and reducing any ferro-resonance problems.

Technical Specifications

		High Current Model		Low Current Model	
Rated Voltage	kV	12/24	36	12/24	36
Lighting Impulse	kV BIL	125/150	170	125/150	170
Frequency	Hz	50/60	50/60	50/60	50/60
Max. continuous current rating	A	250	250	24	24
Pick up current rating	A	20 - 400	20 - 400	8 - 24	8 - 24
Short time current, 1 s (rms value)	kA	4	4	2	2
Programmable counts	#	1, 2, 3 or 4	1, 2, 3 or 4	1, 2, 3 or 4	1, 2, 3 or 4
Reclaim time	#	25, 30, 60, 90, 120, or 180	25, 30, 60, 90, 120, or 180	25, 30, 60, 90, 120, or 180	25, 30, 60, 90, 120, or 180
Sensitivity of pick up current	%	+/- 10	+/- 10	+/- 10	+/- 10

Selection Table

Sect No.		01	02	03	04	05	06	07	08	09	10	11	12
Position of Switches 1 2 3 4		# of Counts											
OFF	<input type="checkbox"/>												
ON	<input checked="" type="checkbox"/>	8	32	20	40	10	60	100	100	250	24	112	20
OFF	<input type="checkbox"/>												
ON	<input checked="" type="checkbox"/>	8	32	20	40	10	60	100	100	250	24	112	20
OFF	<input type="checkbox"/>												
ON	<input checked="" type="checkbox"/>	8	32	20	40	10	60	100	100	250	24	112	20
OFF	<input type="checkbox"/>												
ON	<input checked="" type="checkbox"/>	8	32	20	40	10	60	100	100	250	24	112	20
OFF	<input type="checkbox"/>												
ON	<input checked="" type="checkbox"/>	16	40	40	56	12	80	120	150	300	40	160	25
OFF	<input type="checkbox"/>												
ON	<input checked="" type="checkbox"/>	16	40	40	56	12	80	120	150	300	40	160	25
OFF	<input type="checkbox"/>												
ON	<input checked="" type="checkbox"/>	16	40	40	56	12	80	120	150	300	40	160	25
OFF	<input type="checkbox"/>												
ON	<input checked="" type="checkbox"/>	20	50	50	80	16	100	140	200	350	56	224	30
OFF	<input type="checkbox"/>												
ON	<input checked="" type="checkbox"/>	20	50	50	80	16	100	140	200	350	56	224	30
OFF	<input type="checkbox"/>												
ON	<input checked="" type="checkbox"/>	20	50	50	80	16	100	140	200	350	56	224	30
OFF	<input type="checkbox"/>												
ON	<input checked="" type="checkbox"/>	24	64	60	112	20	130	160	250	400	64	320	36
OFF	<input type="checkbox"/>												
ON	<input checked="" type="checkbox"/>	24	64	60	112	20	130	160	250	400	64	320	36
OFF	<input type="checkbox"/>												
ON	<input checked="" type="checkbox"/>	24	64	60	112	20	130	160	250	400	64	320	36

Number of count setting.
Current setting. Attention should be paid to the direction of the "ON" position.

Indicates the default factory settings.



sales@hikopower.co.nz 0800 473 999 hikopower.co.nz



DISCLAIMER: The information in this document is believed to be correct at the time of publication. The user is responsible for determining whether the product is fit for a particular purpose and suitable for user's method of use or application. No reliance may be placed on any such information or data without first contacting Hiko Power Engineering to clarify individual user requirements.

