



## Pfisterer Fuse Switch Disconnects for LV Overhead Lines

**For up to 160 A and 400 A in-line fused switching and for 16 A tap off connections**

DS0028 R3 Pfisterer LV Fuse Switch Disconnects Datasheet 06/2024

---

**Pfisterer DIN standard fuse switch disconnects for Low Voltage are designed for bare wire or ABC overhead line sectionalising applications.**

The fuse switch disconnect housings are manufactured from weatherproof UV and ageing resistant reinforced polymer.

Contacts are tin plated copper (DIN00) or silver plated copper (DIN1/2). Terminals are fully insulated and made from high grade aluminium alloy, suitable for use with either aluminium or copper conductors on either side.

Both the DIN00 and DIN1/2 size fuse switch disconnects can be mounted on poles, crossarms or other structures. Mounting brackets are available for single and triple

pole plus neutral configuration. Brackets can be fabricated or modified to suit individual requirements.

The 16 A fuse protected tap-off is also fully insulated and can be used on ABC systems using an insulation piercing conductor and on bare overhead conductors, if the terminal bolt is stripped.

## Fuse Switch Disconnects & Tap-off Connectors

Hiko Code	Package Qty	Description	Rated Operation Current	Fuse Size	Mounting Bolts	Dimensions (mm)		
						Length	Width	Height <sup>2</sup>
KP2207R	1	Single pole fuse switch disconnect	160 A <sup>1</sup>	DIN 00	1x M8	207	65	106
KP2209	1	Single pole fuse switch disconnect	400 A	DIN 1/2	2x M8 <sup>3</sup>	345	100	140
KP2202	25	Tap-off fuse connector <sup>4</sup>	2-16 A	NEOZED D01	-	-	-	-

## Fuse Switch Disconnect Technical Data

Hiko Code	In Terminal		Out Terminal		Rated Short Circuit Making Capacity kA	Rated Short Circuit Withstand Current kA	Protection Class	Utilisation Category
	Type	Conductor Size mm <sup>2</sup>	Type	Conductor Size mm <sup>2</sup>				
KP2207R	Single tunnel	6 - 95	Double tunnel	2 x 6 - 95	16	16	IP23	AC21B
KP2209		25 - 240		2 x 25 - 240				

## Accessories

Hiko Code	Package Qty	Description	Material	Mounting Holes	
				Size (mm)	Distance between centres (mm)
WEB002004	1	Slotted angle bracket for 1x KP2207R	2 mm stainless steel 304	9 x 20	-
WEB002014	1	Two-hole angle bracket for 1x KP2207R	6 mm hot dip galvanised steel	2x Ø14	55
KP2213	1	Angle bracket for 3x KP2209		2x Ø18	220

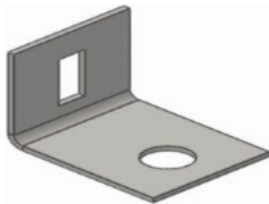


Figure 1 - Slotted angle bracket

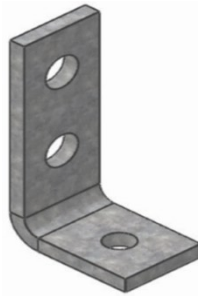


Figure 2 - Two-hole angle bracket



Figure 3 - Angle bracket

### Notes

1. Current rating 245 A with solid links
2. Nominal, excluding mounting bolts and pulling handle
3. Distance between centre lines 60mm
4. For branch conductor 1.5-6mm<sup>2</sup>

### Other literature available on request

Reports, drawings, technical data sheets, installation instructions, O&M guidelines

# PFISTERER