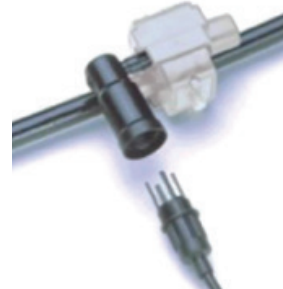
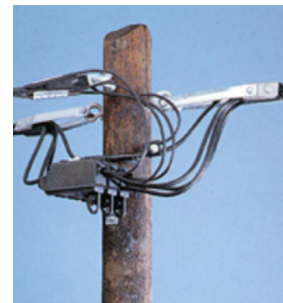


Fuse Switch Disconnects for LV overhead lines

Fused tap-off connections up to 16 A



Hiko supplies DIN standard fused disconnect switches, from Pfisterer and our other manufacturing partners, for Low Voltage bare wire or ABC overhead line sectionaliser applications.

Hiko fuse switch disconnects are manufactured and tested in accordance with IEC 60347 and tested to withstand 15 kV for mounting on poles, crossarms or other structures carrying LV and HV conductors.

Mounting brackets are available for single and triple pole mounting as well as triple pole plus neutral mounting on poles and walls. Brackets can be fabricated or modified to suit individual customer requirements.

Enclosures are manufactured using impact, weather and UV resistant polymers. The fuse carrier incorporates a neon indicator.

The DIN 00 160 A and DIN 1/2 400 A sizes are available with a range of terminal options.

The 16 A fuse protected tap-off connection is fully insulated and can be used on ABC systems using an insulation piercing connector and on bare overhead conductors, if the terminal bolt is stripped.

Fuse switch disconnects and tap-off connectors

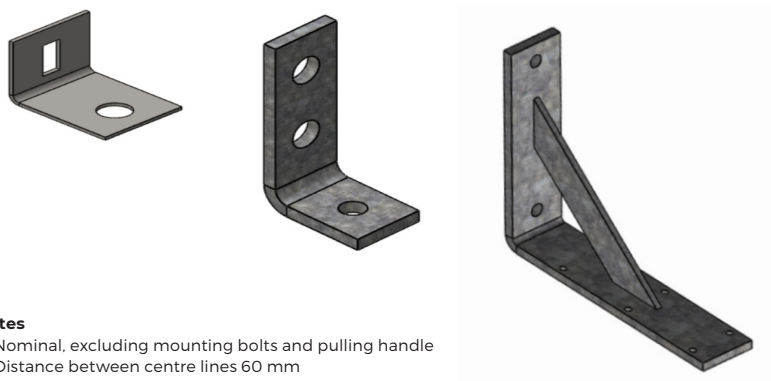
Hiko code	Package quantity	Description	Rated operation current	Fuse size	Mounting bolts	Dimensions (mm)		
						Length	Width	Height ¹
KP2207R	1	Single pole fuse switch disconnect	160 A	DIN 00	1x M8	207	68	104
KP2209	1	Single pole fuse switch disconnect	400 A	DIN 1/2	2x M8 ²	383	100	170
KP2202	15	Tap-off fuse connector ³	2-16 A	NEOZED D01	-	-	-	-

Fuse switch disconnect technical data

Hiko code	In terminal ⁴		Out terminal ⁴		Rated short circuit making capacity kA	Rated short circuit withstand current kA	Protection class	Utilisation category
	Type	conductor size mm ²	Type	conductor size mm ²				
KP2207R	Nickel plated copper single tunnel	16 - 95	Nickel plated copper double tunnel	2 x 16 - 95	16	16	IP23	AC22B
KP2209		25 - 185		2 x 25 - 185				

Accessories

Hiko code	Package quantity	Description	Material	Mounting holes	
				Size (mm)	Distance between centres, mm
WEB002004	1	Slotted angle bracket for 1x KP2207R	2 mm stainless steel 304	9 x 20	-
WEB002014	1	Two-hole angle bracket for 1x KP2207R	6 mm hot dip galvanised steel	2x Ø14	55
KP2213H	1	Angle bracket for 3x KP2209		2x Ø18	220



Notes

1. Nominal, excluding mounting bolts and pulling handle
2. Distance between centre lines 60 mm
3. For branch conductor 2-16 mm²
4. Optional IPC terminals available for 160 A disconnect; pressure pad terminals for 160, 400A disconnects; contact Hiko for advice

Other literature available on request

Test reports, drawings, installation instructions

For more information contact your Hiko Power Engineering representative
Hiko Power Engineering reserve the right to amend product details without notice.
DS0028 01-17

PFISTERER